



YAAAAAS!

KIRRAWEE START FRESH
KEEP CALM
AND MOVE IN
HERE!!

BRAND NEW APARTMENTS#

LIVE LIFE LIVE FREE

START ADULTING STOP DAYDREAMING
ISSA VIBE!!!!!! YOLO

START

OWN IT LIVE IT I LOVE IT ESC

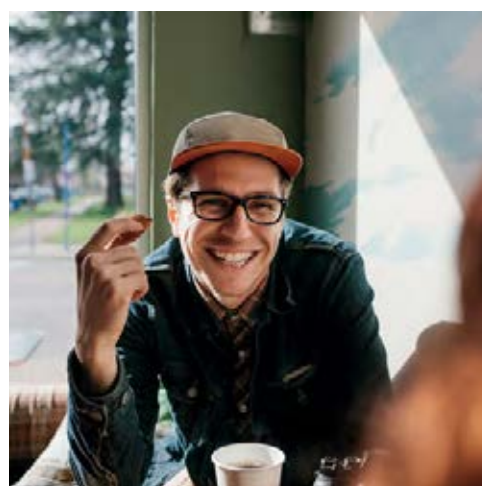
NEW HOME PICS OR IT
WHO DIS? DIDN'T STAY WOKE

ESCAPE THE DAILY GRIND
HAPPEN SOUTH VILLAGE
DO IT ALREADY
ESCAPE

LIVING HERE!

HAPPENINGS

Live your best life: South Village's Escape is the ultimate haven. Escape proves that adulting doesn't have to be boring. Forget FOMO: you'll never want to be anywhere but here.



ESC

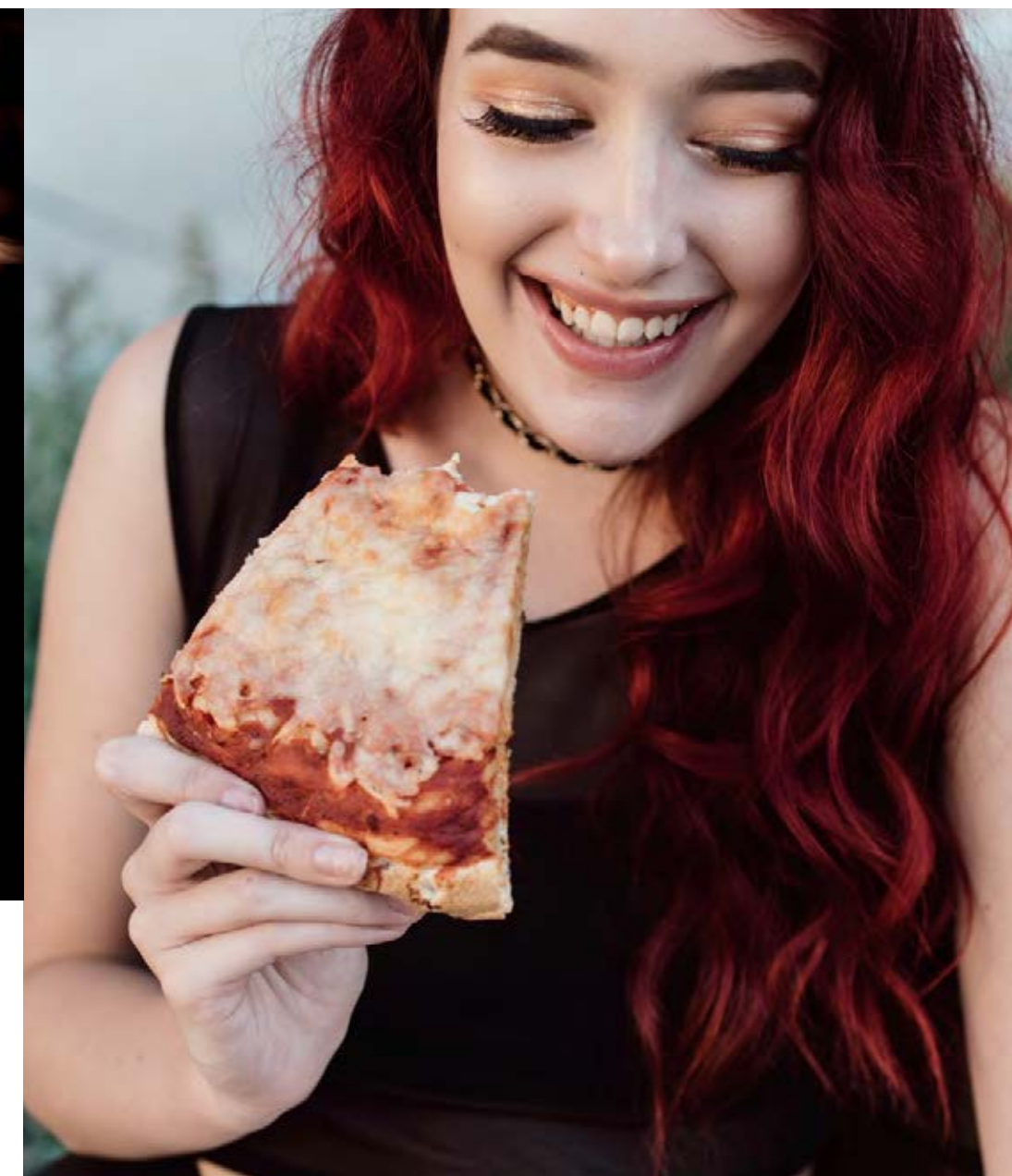


LET'S SHARE

At street level, a feast awaits you.
The South Village dining district has an
eatery for every mood: cafés for that
first caffeine hit of the day, or the row of
gourmet restaurants for every type of
dinner date. Tacos? Check. Sushi? Hell yes.
Pizza? Thai? Burgers? It just gets
better and better.



SAID NO ONE EVER!





KIRRA WEEEEE...



Treat yourself. South Village's interconnected layout means everything you need is never far away. Shop 'til you drop in the 14,000sqm shopping centre just downstairs: you'll find your favourite retailers, as well as Coles and Aldi. With a barber, Flight Centre and a nail salon also found in the new retail precinct, you'll find it hard to leave.



At just a three-minute walk to Kirrawee train station, you've got the freedom to go anywhere you want in no time. Whether you have work in the city or going for a big night out at Cronulla, Escape couldn't be more conveniently located.

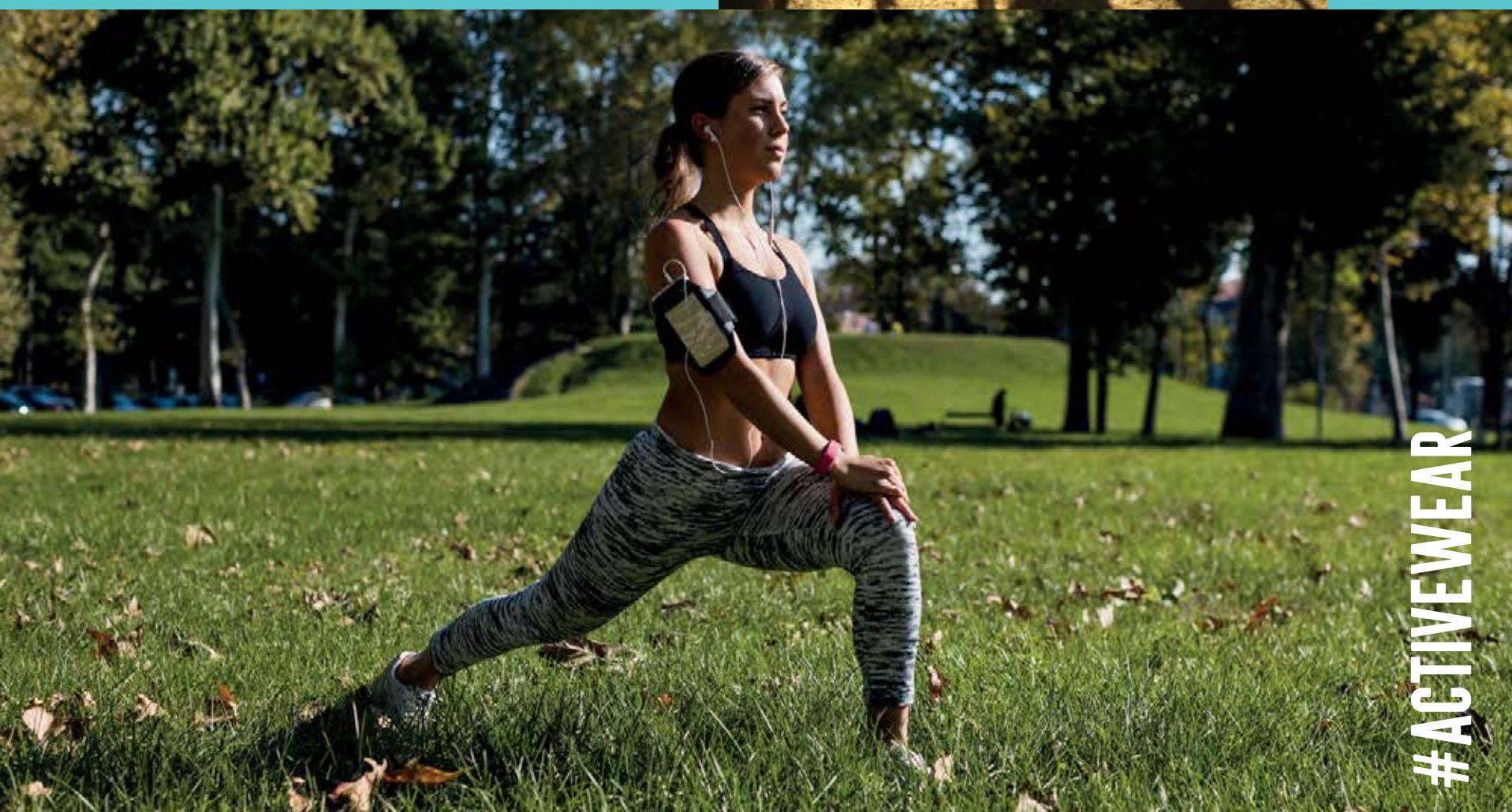
I'M SEXY



Living in the Village doesn't have to mean losing touch with nature. With a 9,000sqm park on the grounds, you're free to run, stretch, bike, or to lie back on the grass and just chill.



I ♥
ESC



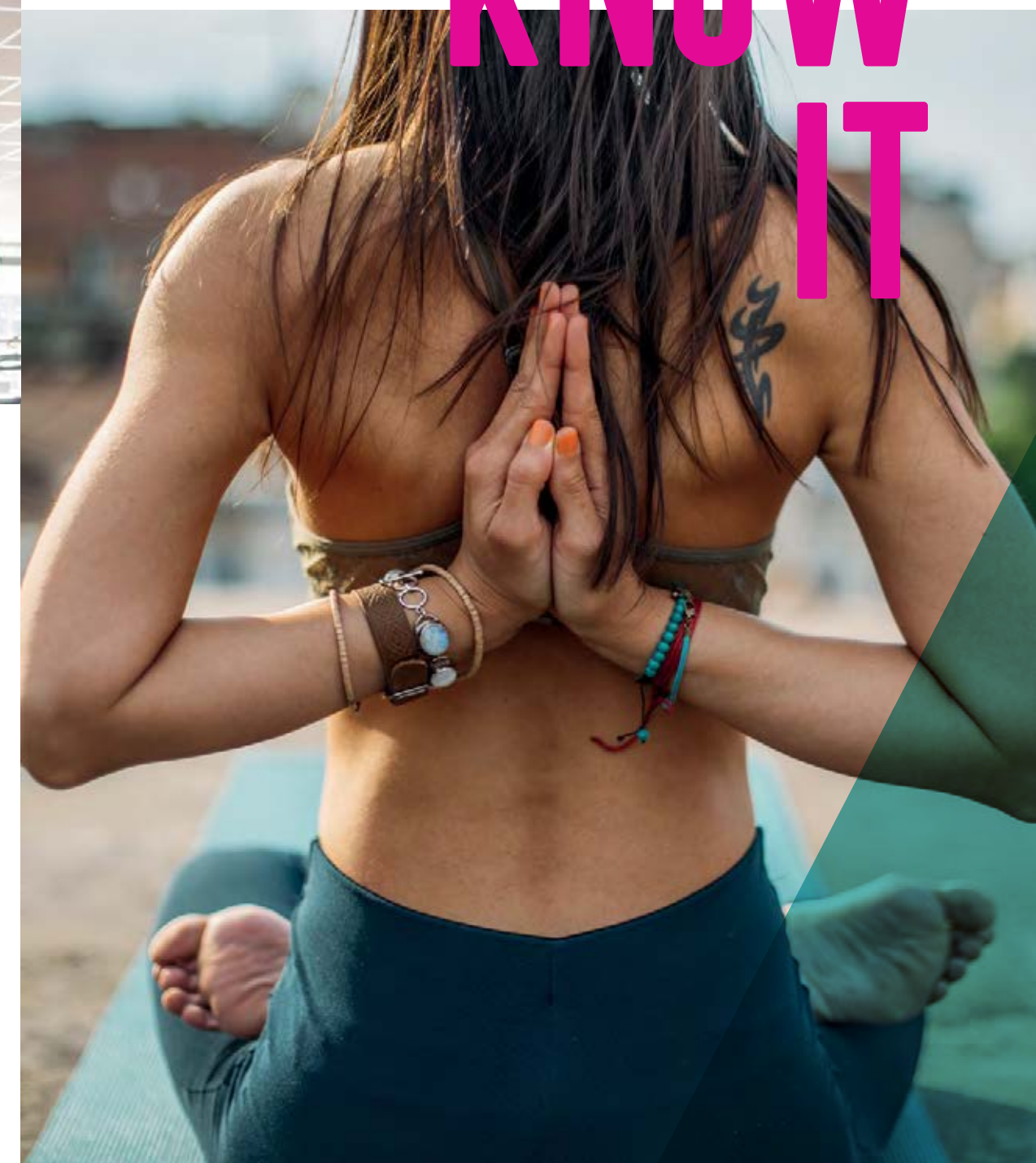
#ACTIVEWEAR

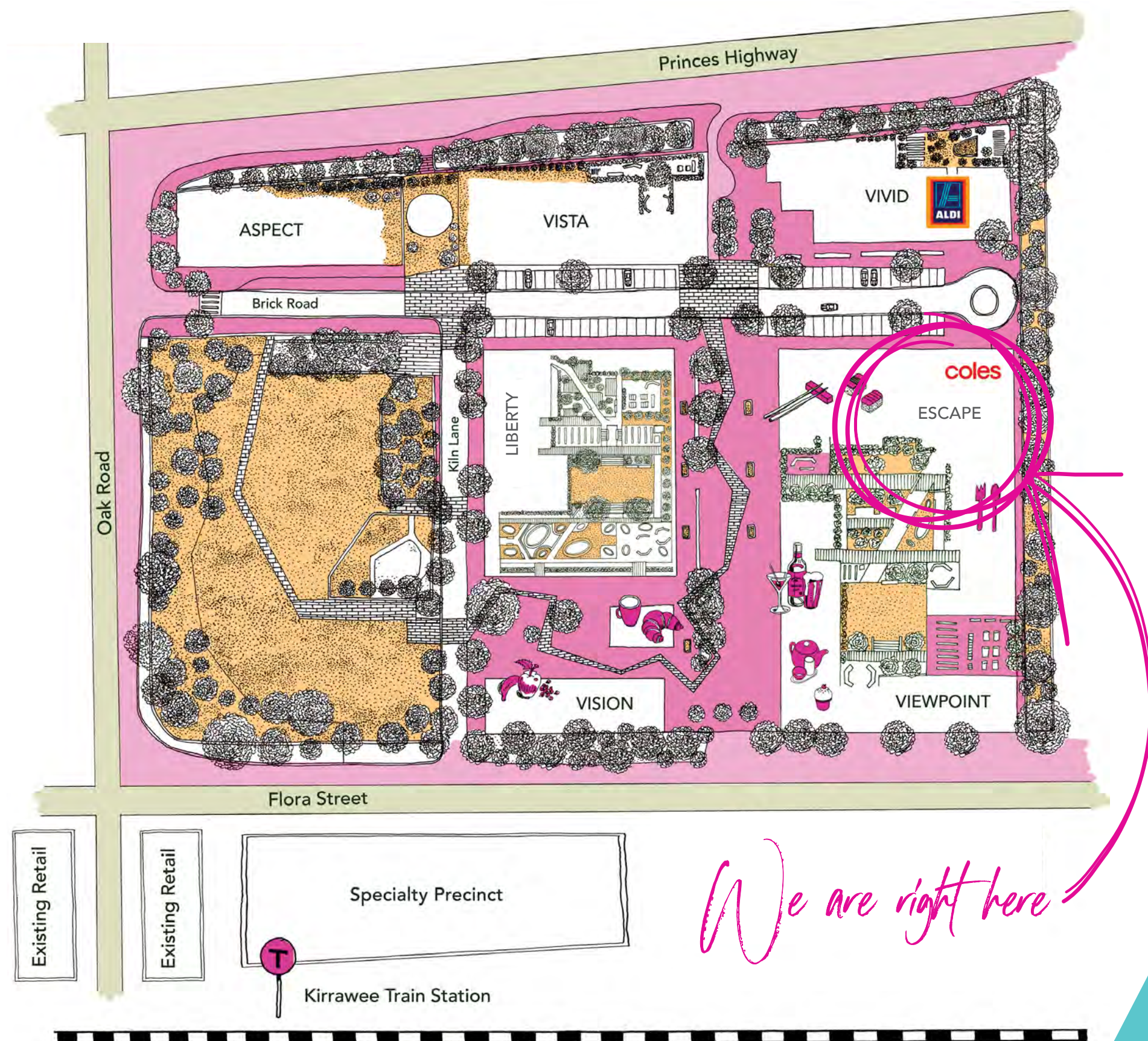


AND I KNOW IT



Stay active at Escape: get shredded in the Plus Fitness gym, or just zen out in the Body Mind Life yoga studio. Doesn't really matter what you're doing, as long as you're hustling, right?





REDISCOVER YOURSELF

Find everything you could ever want right here in South Village. With a park, shopping centre, Coles, Aldi, a gym, and restaurants, there's nothing you couldn't find from the comfort of your own home. Too blessed to be stressed.

32 MINUTES
to the airport with a change at Wolli Creek

36 SPECIALTY RETAILERS
including cafés, culturally diverse restaurants, eclectic delis and flagship Coles and Aldi supermarkets

3 MINUTE
walk to Kirrawee train station

100 METRES
to Sutherland Shire's largest employment zone, with over 300 small- and medium-sized enterprises employing thousands of skilled workers

180 DEGREE VIEWS
of Botany Bay, Sydney CBD, Cronulla Beach and Royal National Park

33 MINUTE
train ride to the Sydney CBD, 12 minutes to Cronulla, 4 minutes to Westfield Miranda

9000 SQUARE METRES
of lush greenery in the new local park within South Village

9 MINUTES
to Kareena Private Hospital and The Sutherland Hospital

0.7% VACANCY RATE
in Kirrawee, with a strong rental demand

1 MINUTE
walk to Kirrawee Public School, 4-minute drive to Kirrawee High School, 11-minute drive to Caringbah

WELCOME

YAAAAAS APARTMENTS!

Be brighter; live bigger. Escape is your sweet release in Sydney's glittering, sundrenched South. From the highly desirable location to unbeatable value, each element of Escape is ultimate goals. Your first foray into the world should be as dynamic as you; where else can you find an energised universe of choice and experience?

Whether you want to hit the beach, grab coffee with your mates, or chill with your neighbours in the open air Grounds, everything is here and waiting.

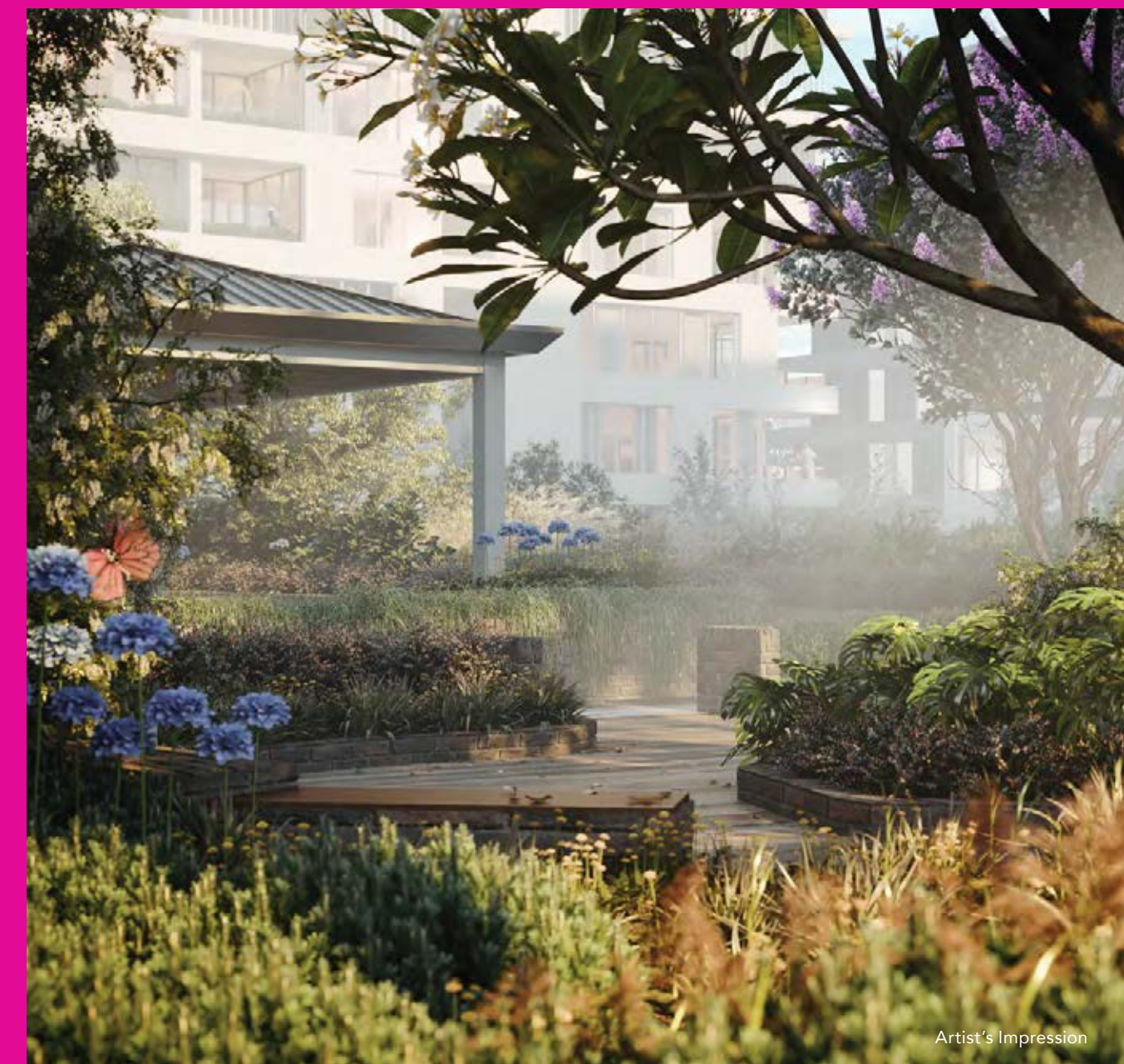
Grab your groceries, do a workout and get a bite to eat, all in the same incredible place. Endless blue skies are calling you - reach out and make each day yours in an essential Escape.





FLYING HIGH

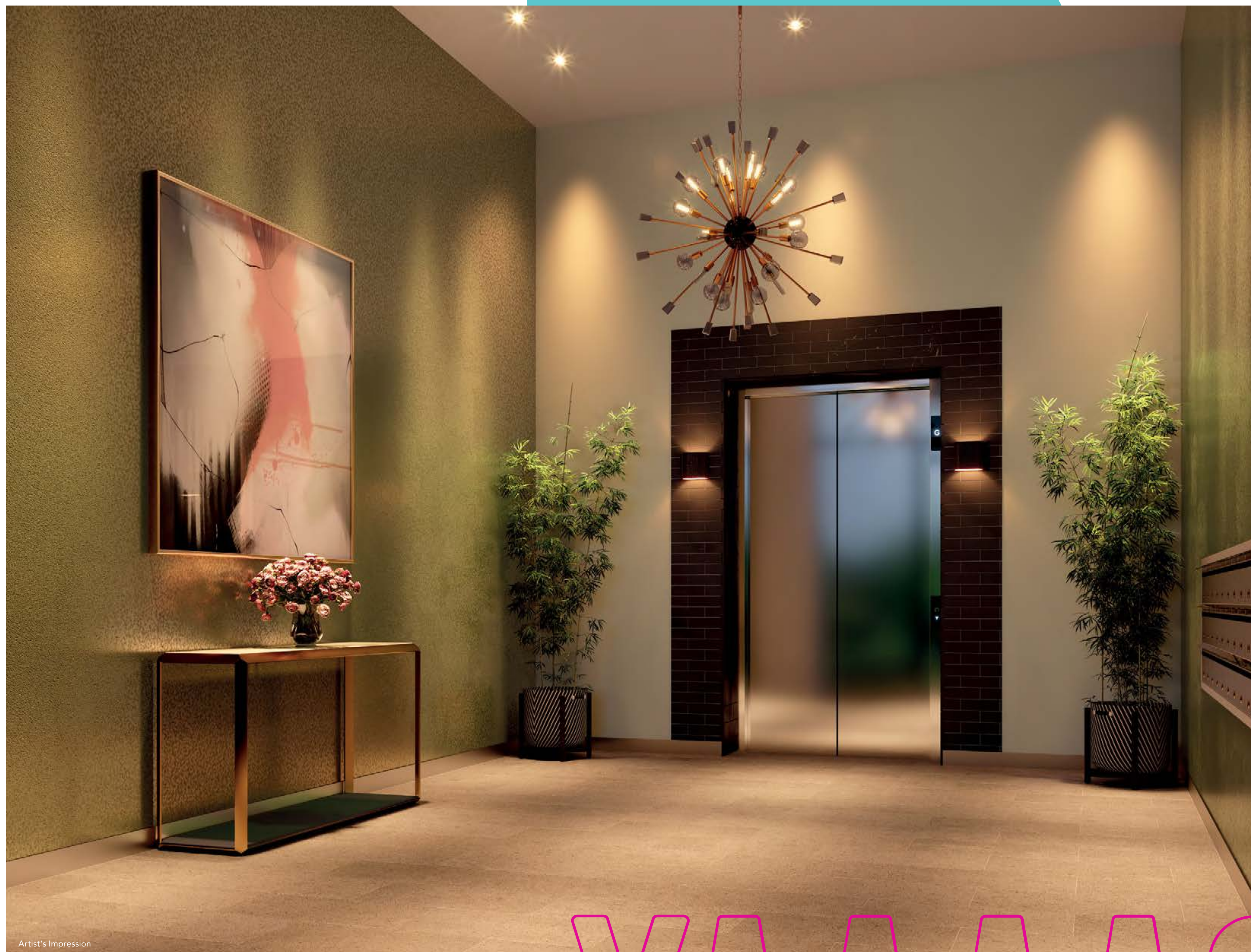
Escape's entertainment Grounds is truly the gift that keeps on giving. Quiet spaces amongst the trees, a barbecue area to gather your friends, and an open air cinema for the ultimate movie night. What more could you want?



Artist's Impression



Artist's Impression



Artist's Impression

VWAAS



Artist's Impression

ESCAPE TO YOUR HOME

How about that view, huh? Escape's balconies boast views of Botany Bay, Sydney CBD, Cronulla Beach and the Royal National Park. Kick back with a cold one and take it in: it's all yours. #nofilter needed.



Artist's Impression



Artist's Impression

FINISHES AND FIXTURES

With two balanced colour schemes to pick from, your apartment's vibe is yours to decide. Both include premium floor tiles and wood finishes.

Want to evoke the feeling of being beachside? Escape's light colour scheme will help your apartment glow with natural light, mirroring Cronulla's soft banks.

Or maybe something slightly more luxurious? The dark scheme helps your space feel that little bit more special with deeper tones.

LIGHT

DARK

Bathroom wall & floor tiles, Kitchen floor tiles



Bathroom splashback, benchtop stone



Kitchen feature joinery, Bathroom base joinery



Bedroom carpet



Kitchen joinery



Timber flooring



DEICORP

Founded in 1999, Deicorp has established itself as one of Sydney's leading property developers. We are committed to building high-quality, high-value residences that enhance the environment and create stronger communities in Sydney's growing areas. A Deicorp property is always clever, connected, accessible, affordable and liveable.

YOUR KICK YAAAAAS TEAM!



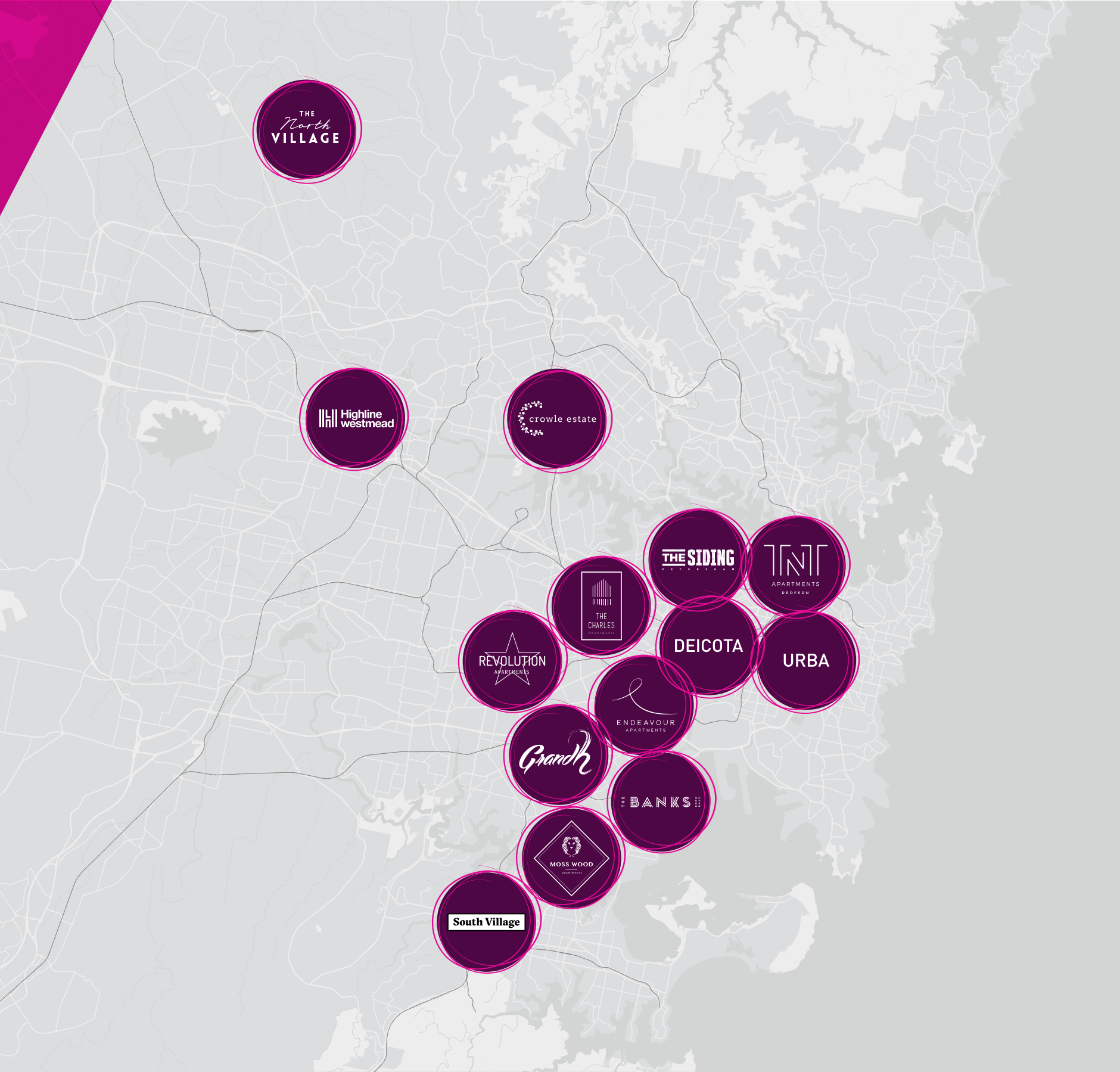
Scott Carver stands apart as an advocate of change - a motivator and an enabler. Through design, we transform insight into real-world property solutions with an emotive design approach that engages and inspires people to live life and prosper. We amplify opportunity.



TURNER

Turner's projects include urban design and master planning, social and affordable housing, apartments and houses, student accommodation, senior living, workplaces, showrooms, industrial, public buildings, hospitality and increasingly hybrid combinations of these typologies.

ESCAPE



The North Village, Kellyville
209 apartments, 13 retail shops

Highline, Westmead
556 apartments

Crowle Estate, Meadowbank
416 apartments

The Charles, Canterbury
229 apartments, 8 retail shops with Woolworths and BWS

Moss Wood, Kogarah
84 apartments

URBA, Redfern
135 apartments

Deicota, Redfern
89 apartments

TNT Apartments, Redfern
162 apartments

Endeavour Apartments, Arncliffe
234 apartments, 6 commercial and retail spaces

GrandH, Hurstville
381 apartments

The Banks, Rockdale
365 apartments

Revolution Apartments, Marrickville
179 apartments

South Village, Kirrawee
779 apartments, 36 specialty retailers plus flagship Coles and Aldi supermarkets

This document was produced prior to commencement of construction. The pictures showing the interiors of the apartments and buildings are indicative only. Changes may be made during the development and any dimensions, finishes and specifications are subject to change without notice. Design and CGI Renders by Heard Agency.

OWN IT LIVE IT I LOVE IT ESCAPE
NEW HOME PICS OR IT DIDN'T STAY WOKE
WHO DIS? DIDN'T STAY WOKE
ESCAPE HAPPEN SOUTH VILLAGE
THE DAILY GRIND # ESCAPE
LIVING HERE!



SOUTHVILLAGEAPARTMENTS.COM.AU
1800 334 267